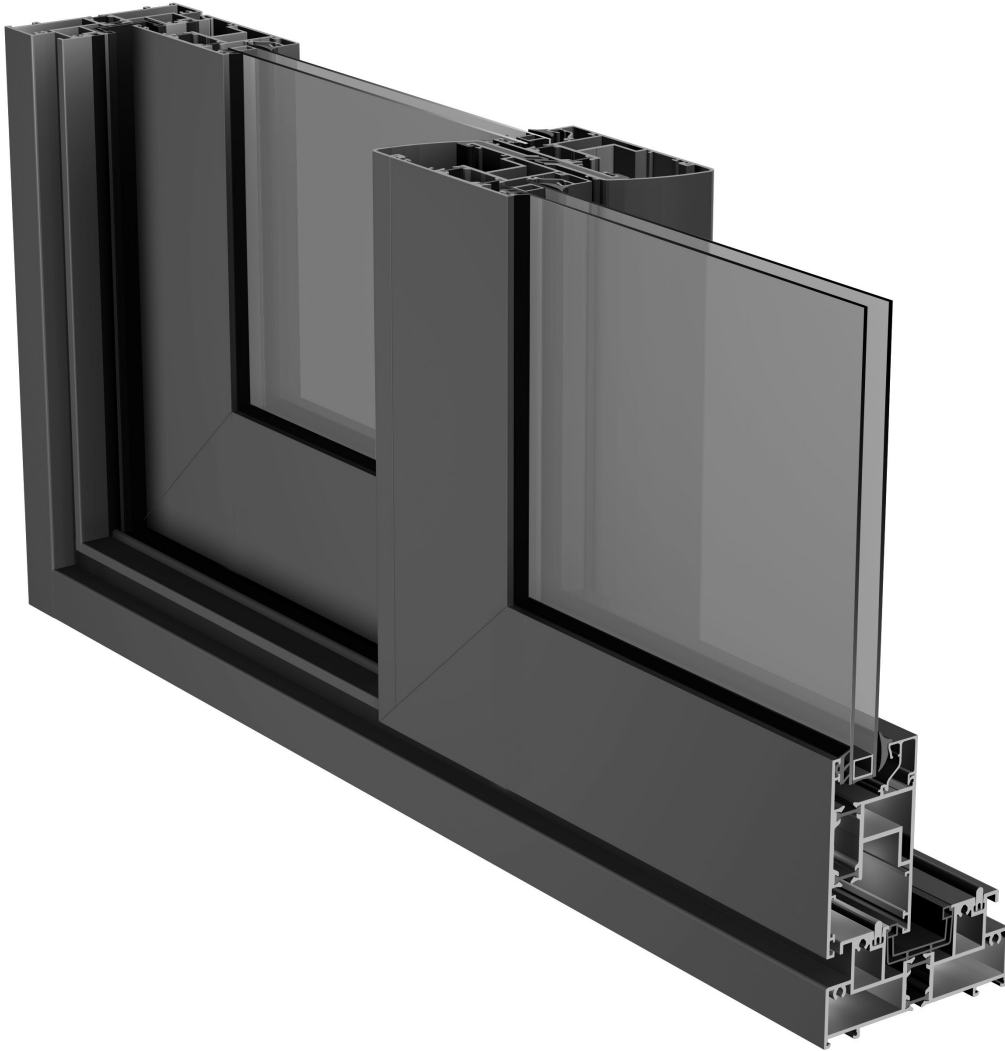


# MİMARİ KATALOG :

Alüminyum Kapı Pencere ve  
Giydirme Cephe Sistemleri



RESCARA  
SİSTEM  
PROFİL  
DETAYLARI



# RST116

# RESCARA SİSTEM

Alüminyum Kapı Pencere ve  
Giydirme Cephe Sistemleri



21

22

23

24

25

26

27

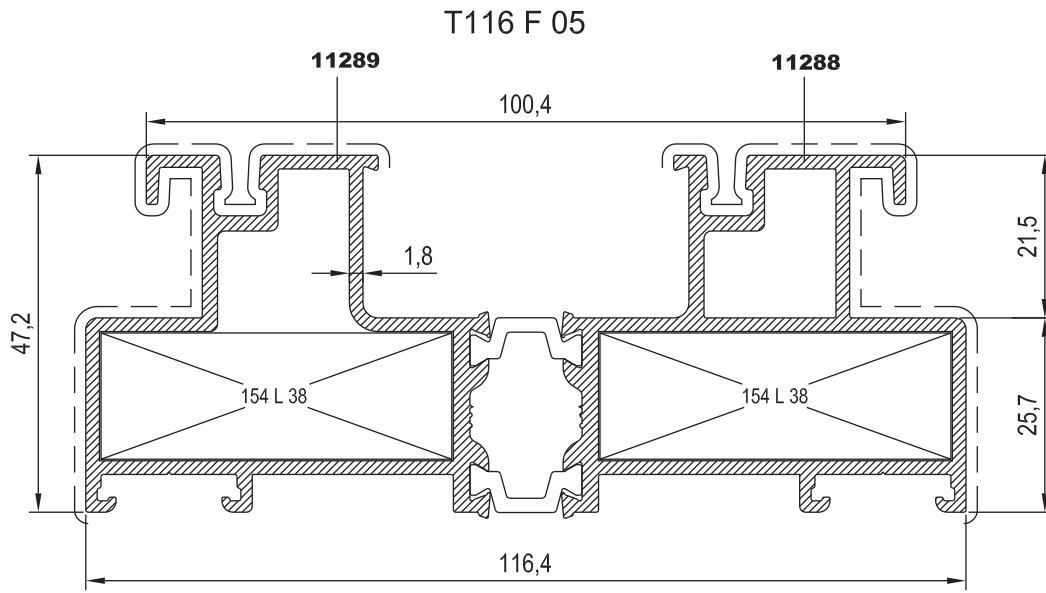
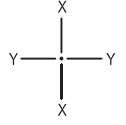
28

29

30



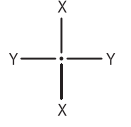
KOD / CODE	AĞIRLIK (kg/m) / WEIGHT	Jxx cm <sup>4</sup>	Jyy cm <sup>4</sup>	L m
T116 F 05	2,549	85,379	20,419	6



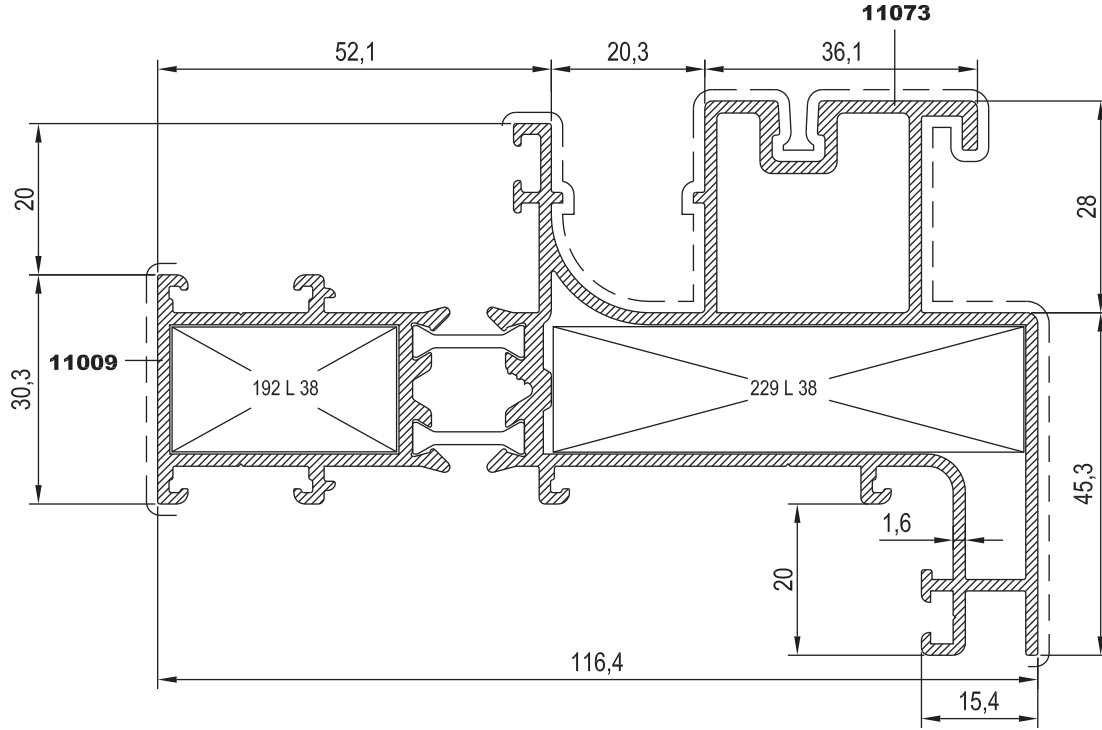
Nr	KESİM ÖLÇÜSÜ CUTTING SIZE		AKS. KODU ACS. CODE
	Nr	25 L 38(2074)	
T116 F 05	11289	25 L 38(2074)	154 L 38
	11288	25 L 38(2074)	



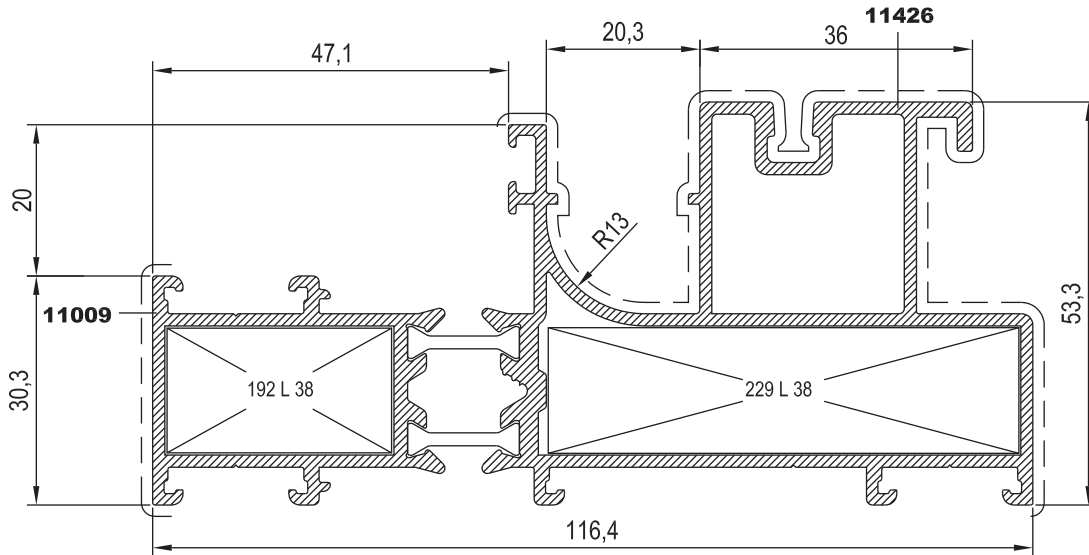
KOD / CODE	AĞIRLIK (kg/m) / WEIGHT	Jxx cm <sup>4</sup>	Jyy cm <sup>4</sup>	L m
T116 F 04	2,622	87,481	31,121	6
T116 F 06	2,485	74,916	21,916	6



T116 F 04



T116 F 06



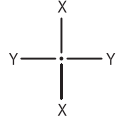
Nr

KESİM ÖLÇÜSÜ  
CUTTING SIZEAKS. KODU  
ACS. CODE

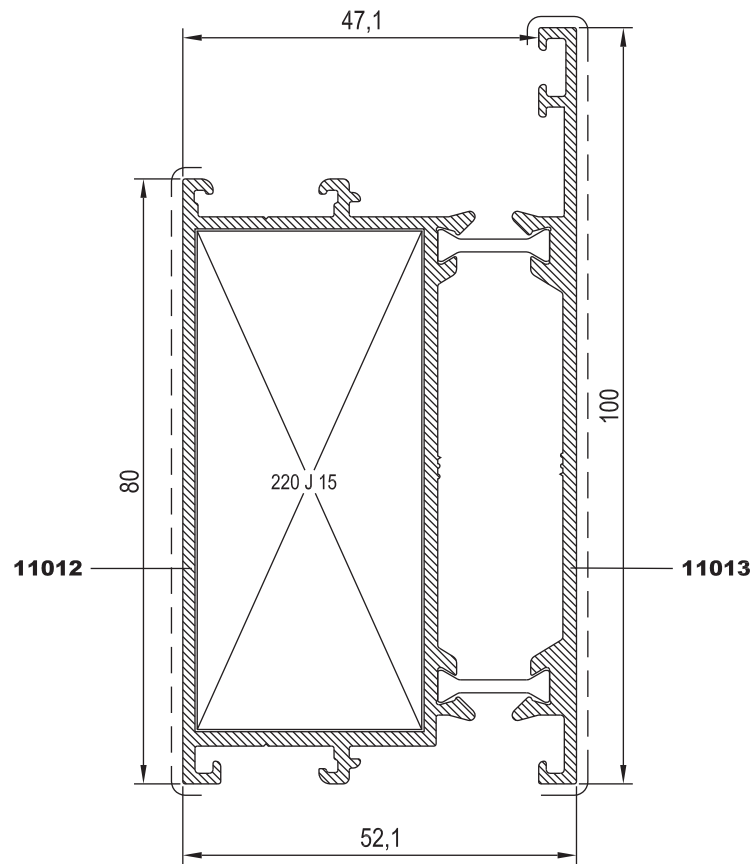
T116 F 04	11009	25 L 38(2074)	29,9 mm	192 L 38
	11073	25 L 38(2074)	62,4 mm	229 L 38
T116 F 06	11009	25 L 38(2074)	29,9 mm	192 L 38
	11426	25 L 38(2074)	62,4 mm	229 L 38




KOD / CODE	AĞIRLIK (kg/m) / WEIGHT	Jxx cm <sup>4</sup>	Jyy cm <sup>4</sup>	L m
T116 F 03	1,937	18,966	57,332	6



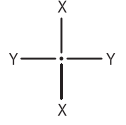
T116 F 03



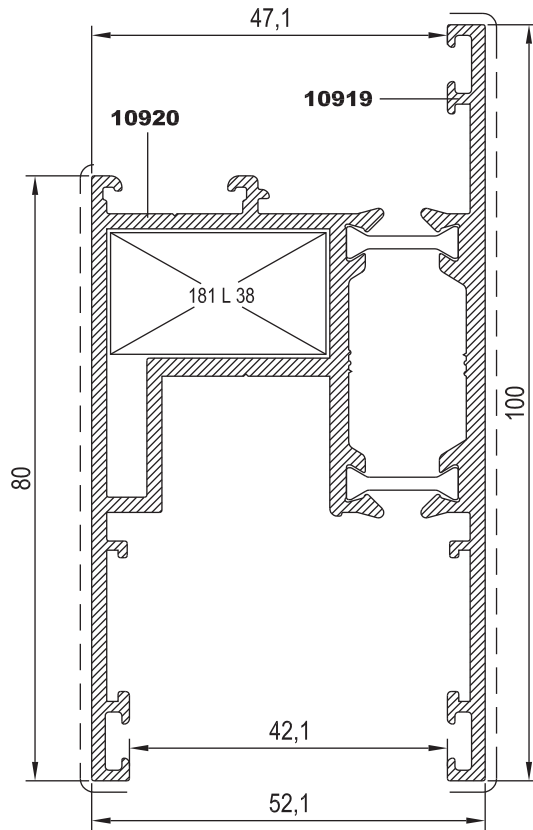
Nr	 L m	KESİM ÖLÇÜSÜ CUTTING SIZE	AKS. KODU ACS. CODE	
T116 F 03	11012	25 J 15 (11015)	66,2 mm	220 J 15
	11013	----	---	---



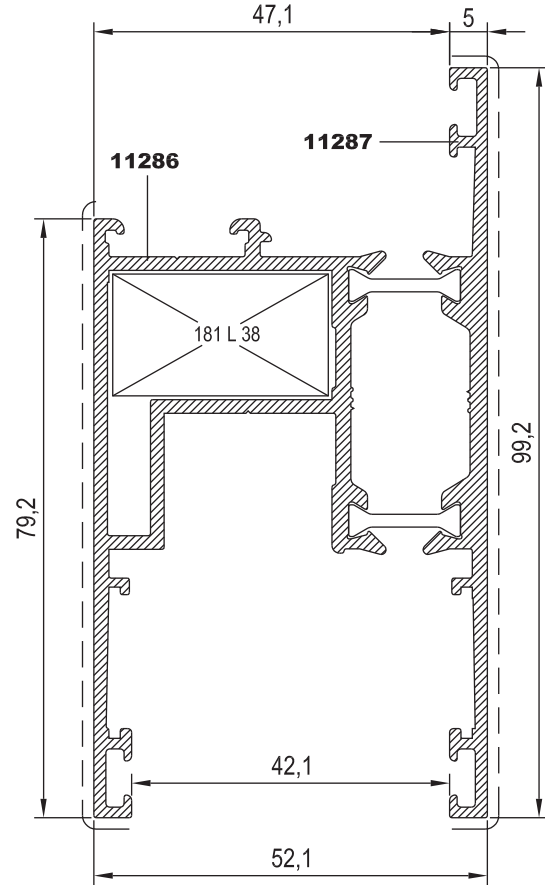
KOD / CODE	AĞIRLIK (kg/m) / WEIGHT	Jxx cm <sup>4</sup>	Jyy cm <sup>4</sup>	L m
T116 V 01	2,194	23,765	43,220	6
T116 V 02	2,007	21,988	39,156	6



T116 V 01



T116 V 02



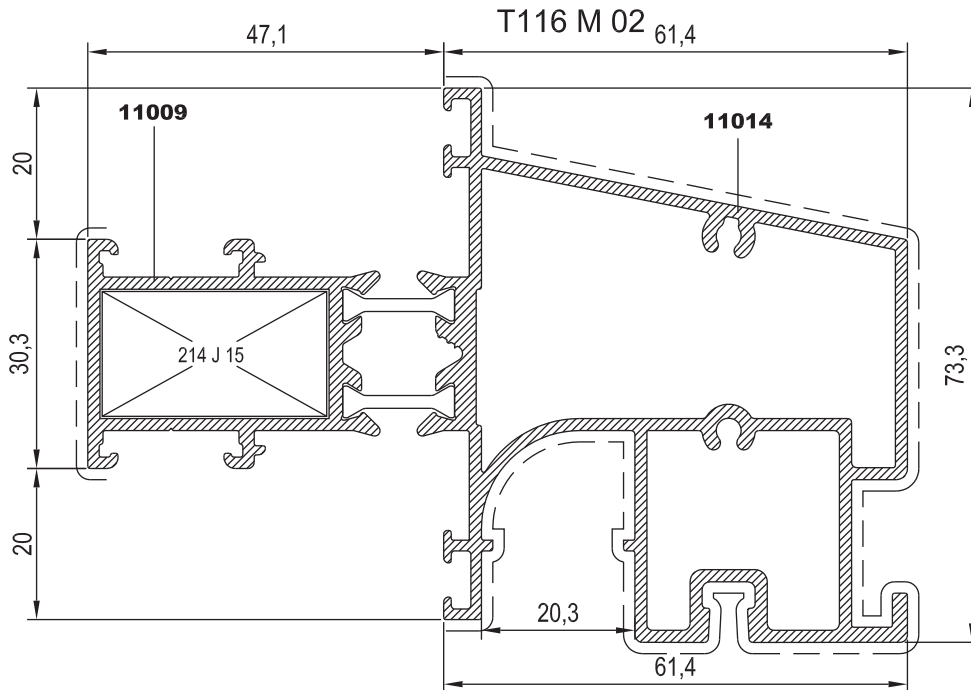
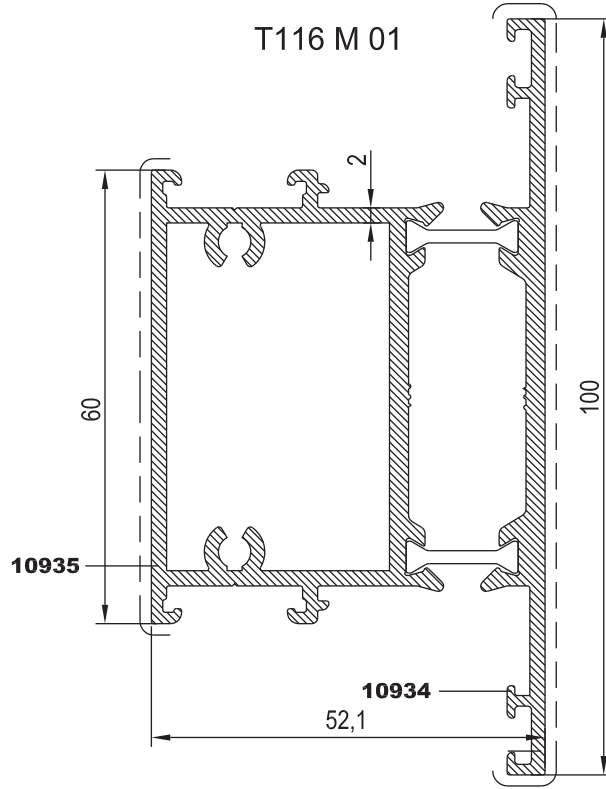
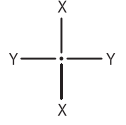
Nr

KESİM ÖLÇÜSÜ  
CUTTING SIZE

Nr		KESİM ÖLÇÜSÜ CUTTING SIZE	AKS. KODU ACS. CODE
T116 V 01	10920	25 L 38(2074)	29,1 mm
	10919	---	---
T116 V 02	11286	25 L 38(2074)	29,1 mm
	11287	---	---



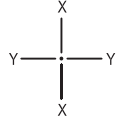
KOD / CODE	AĞIRLIK (kg/m) / WEIGHT	Jxx cm <sup>4</sup>	Jyy cm <sup>4</sup>	L m
T116 M 01	2,189	20,673	42,515	6
T116 M 02	2,524	69,214	30,604	6



Nr	L m	KESİM ÖLÇÜSÜ CUTTING SIZE	AKS. KODU ACS. CODE		
				T116 M 02	11009
		11014	---	---	---



KOD / CODE	AĞIRLIK (kg/m) / WEIGHT	Jxx cm4	Jyy cm4	L m
T116 A 01	0,754	---	---	6
T116 A 03	0,477	---	---	6



21

22

23

24

25

26

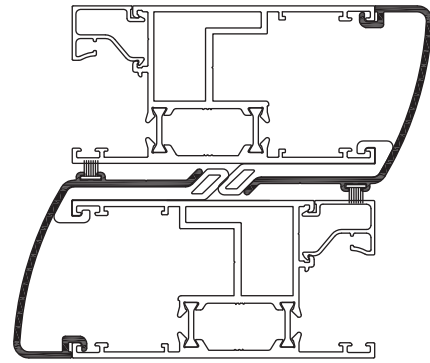
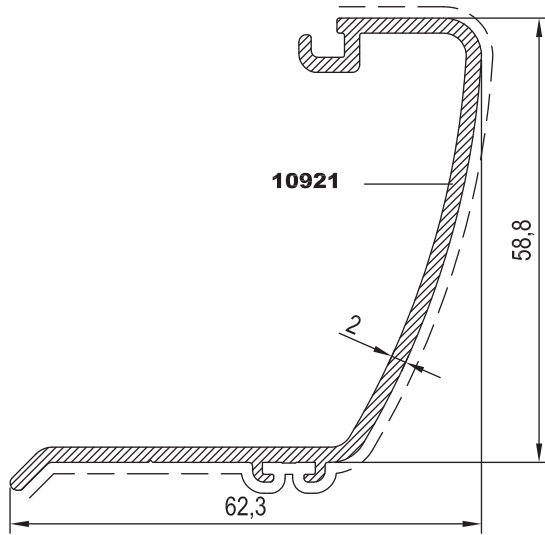
27

28

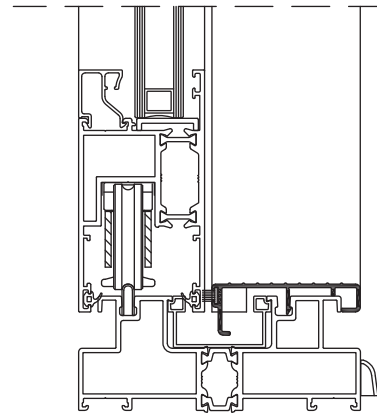
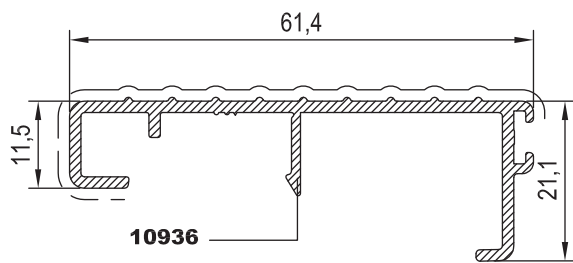
29

30

T116 A 01



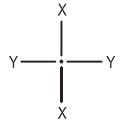
T116 A 03



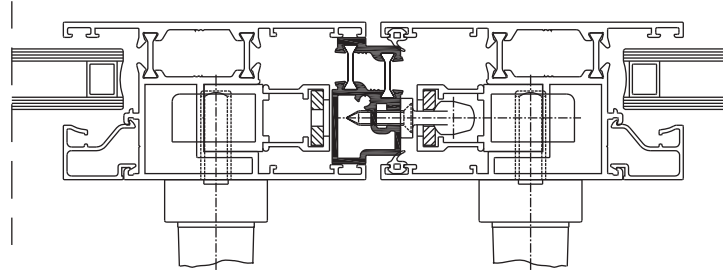
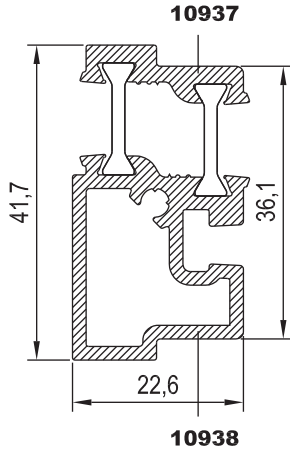




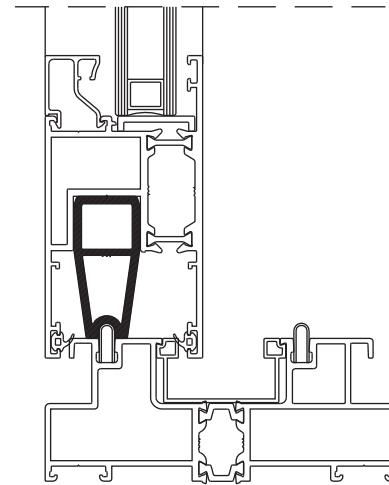
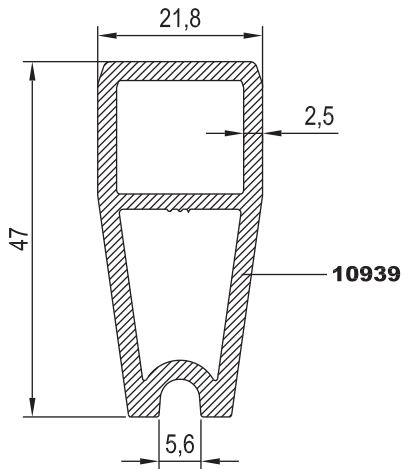
KOD / CODE	AĞIRLIK (kg/m) / WEIGHT	Jxx cm <sup>4</sup>	Jyy cm <sup>4</sup>	L m ←→
T116 A 04	0,863	---	---	6
T116 A 05	0,940	---	---	6
T116 A 06	0,514	---	---	6



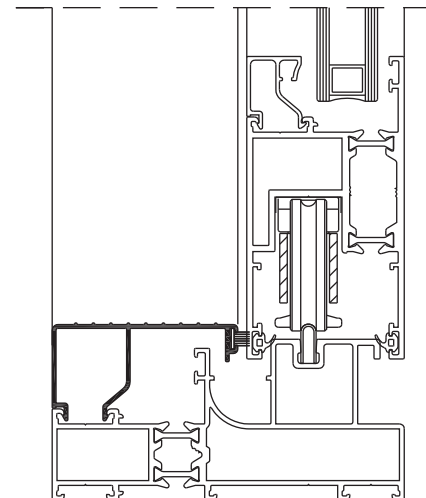
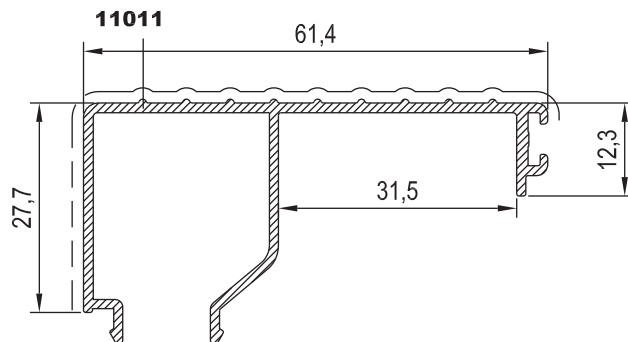
T116 A 04



T116 A 05



T116 A 06



21

22

23

24

25

26

27

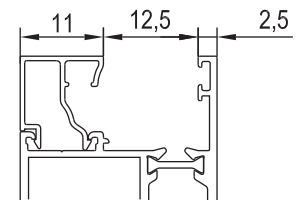
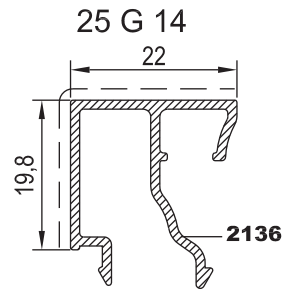
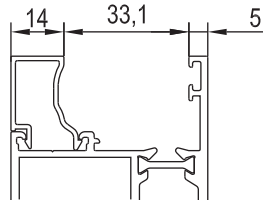
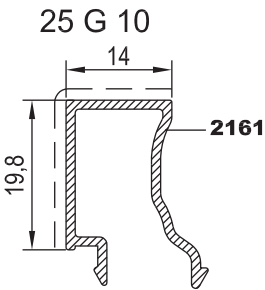
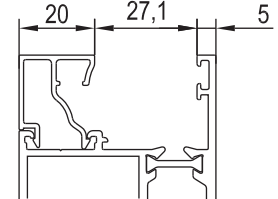
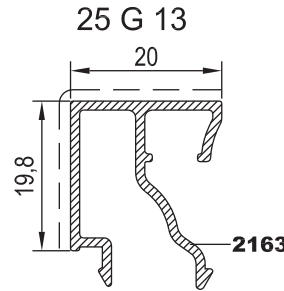
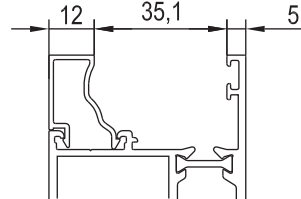
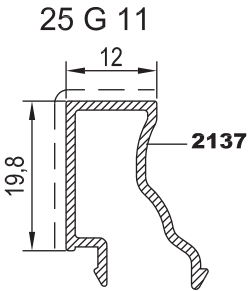
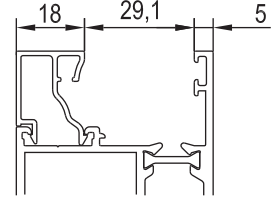
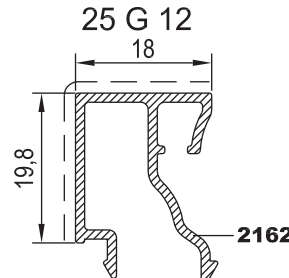
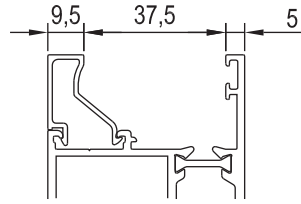
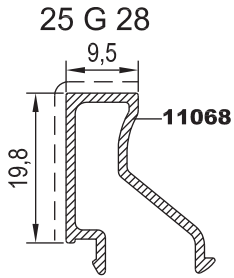
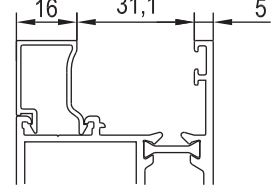
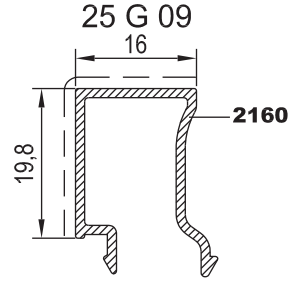
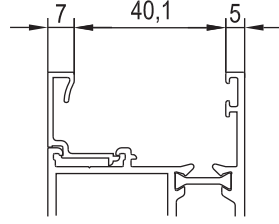
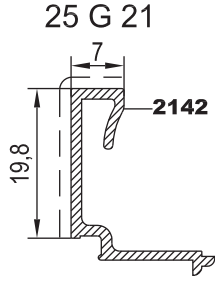
28

29

30

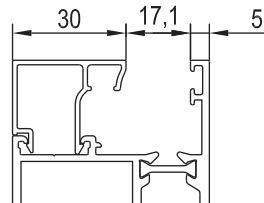
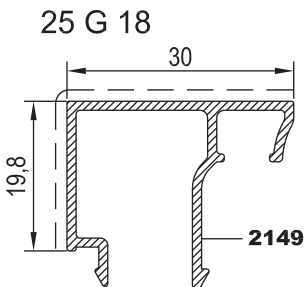
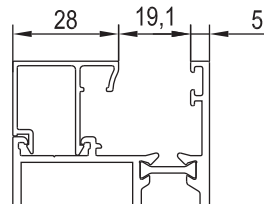
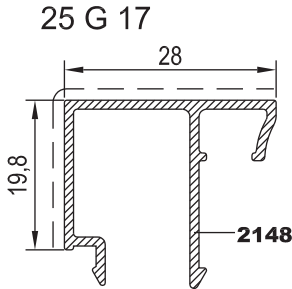
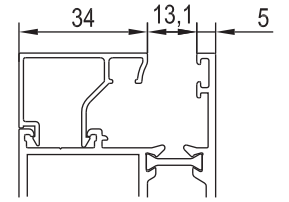
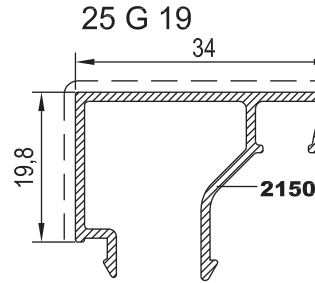
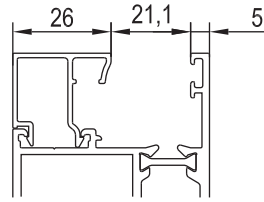
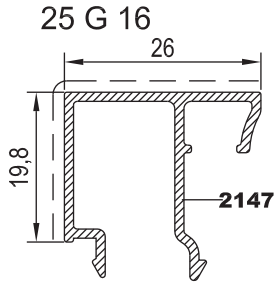
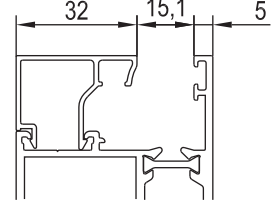
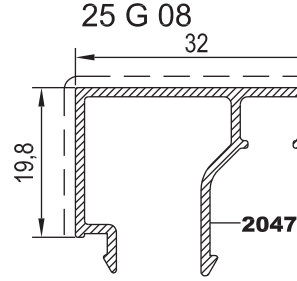
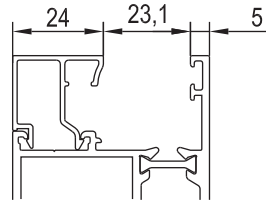
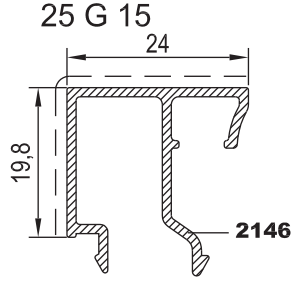


KOD / CODE	AĞIRLIK (kg/m) / WEIGHT	L m	KOD / CODE	AĞIRLIK (kg/m) / WEIGHT	L m	
25 G 21	0,195	6	25 G 09	0,227	6	
25 G 28	0,215	6	25 G 12	0,264	6	
25 G 11	0,218	6	25 G 13	0,272	6	
25 G 10	0,222	6	25 G 14	0,275	6	





KOD / CODE	AĞIRLIK (kg/m) / WEIGHT	L m	KOD / CODE	AĞIRLIK (kg/m) / WEIGHT	L m	
25 G 15	0,282	6	25 G 08	0,307	6	
25 G 16	0,285	6	25 G 19	0,316	6	
25 G 17	0,289	6				
25 G 18	0,297	6				



21

22

23

24

25

26

27

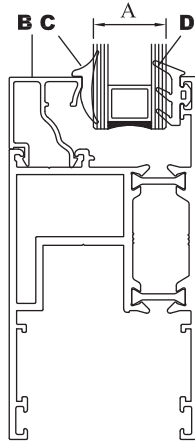
28

29

30



B, CAM ÇİTASI GLAZING BEAD	C, İÇ CAM FİTİLİ GLAZING GASKET	A, CAM KALINLIĞI GLASS THICKNESS	D, DIŞ CAM FİTİLİ GLAZING GASKET
25 G 19	01.17.04	5 mm	01.16.02
25 G 19	01.17.03	6 mm	01.16.02
25 G 08	01.17.04	7 mm	01.16.02
25 G 08	01.17.03	8 mm	01.16.02
25 G 18	01.17.04	9 mm	01.16.02
25 G 18	01.17.03	10 mm	01.16.02
25 G 17	01.17.04	11 mm	01.16.02
25 G 17	01.17.03	12 mm	01.16.02
25 G 16	01.17.04	13 mm	01.16.02
25 G 16	01.17.03	14 mm	01.16.02
25 G 15	01.17.04	15 mm	01.16.02
25 G 15	01.17.03	16 mm	01.16.02
25 G 14	01.17.04	17 mm	01.16.02
25 G 14	01.17.03	18 mm	01.16.02
25 G 13	01.17.04	19 mm	01.16.02
25 G 13	01.17.03	20 mm	01.16.02
25 G 12	01.17.04	21 mm	01.16.02
25 G 12	01.17.03	22 mm	01.16.02
25 G 09	01.17.04	23 mm	01.16.02
25 G 09	01.17.03	24 mm	01.16.02
25 G 10	01.17.04	25 mm	01.16.02
25 G 10	01.17.03	26 mm	01.16.02
25 G 11	01.17.04	27 mm	01.16.02
25 G 11	01.17.03	28 mm	01.16.02
25 G 28	01.17.05	29 mm	01.16.02
25 G 28	01.17.04	30 mm	01.16.02
25 G 21	01.17.05	31 mm	01.16.02
25 G 21	01.17.04	32 mm	01.16.02
25 G 21	01.17.03	33 mm	01.16.02




**TAKOZLAR (CLEATS)**

PROFİL KODU (PROFILE CODE)	25 L 38	25 J 15		
FABRİKA KODU (FACTORY CODE)	2074	11015		
AĞIRLIK (WEIGHT)	4,854 kg/m	1,035 kg/m		
ÇİZİM (DRAWING)				

**KÖŞE TAKOZLARI (CORNER CLEATS)**

Nr		L m	KESİM ÖLÇÜSÜ CUTTING SIZE		AKS. KODU ACS. CODE
T116 F 01	10917	25 L 38(2074)	45,9 mm		204 L 38
	10918	25 L 38(2074)			
T116 F 02	11009	25 L 38(2074)	29,9 mm		192 L 38
	11010	25 L 38(2074)	62,4 mm		229 L 38
T116 F 04	11009	25 L 38(2074)	29,9 mm		192 L 38
	11073	25 L 38(2074)	62,4 mm		229 L 38
T116 F 05	11289	25 L 38(2074)	46,5 mm		154 L 38
	11288	25 L 38(2074)			
T116 V 01	10920	25 L 38(2074)	29,1 mm		181 L 38
T116 V 02	11286	25 L 38(2074)	29,1 mm		181 L 38

**ORTA KAYIT BAĞLANTI (MULLION CONNECTION PIECE)**

Nr		L m	KESİM ÖLÇÜSÜ CUTTING SIZE		AKS. KODU ACS. CODE
T116 F 03	11012	25 J 15 (11015)	66,2 mm		220 J 15
T116 M 02	11009	25 J 15 (11015)	16,8 mm		214 J 15



21

22

23

24

25

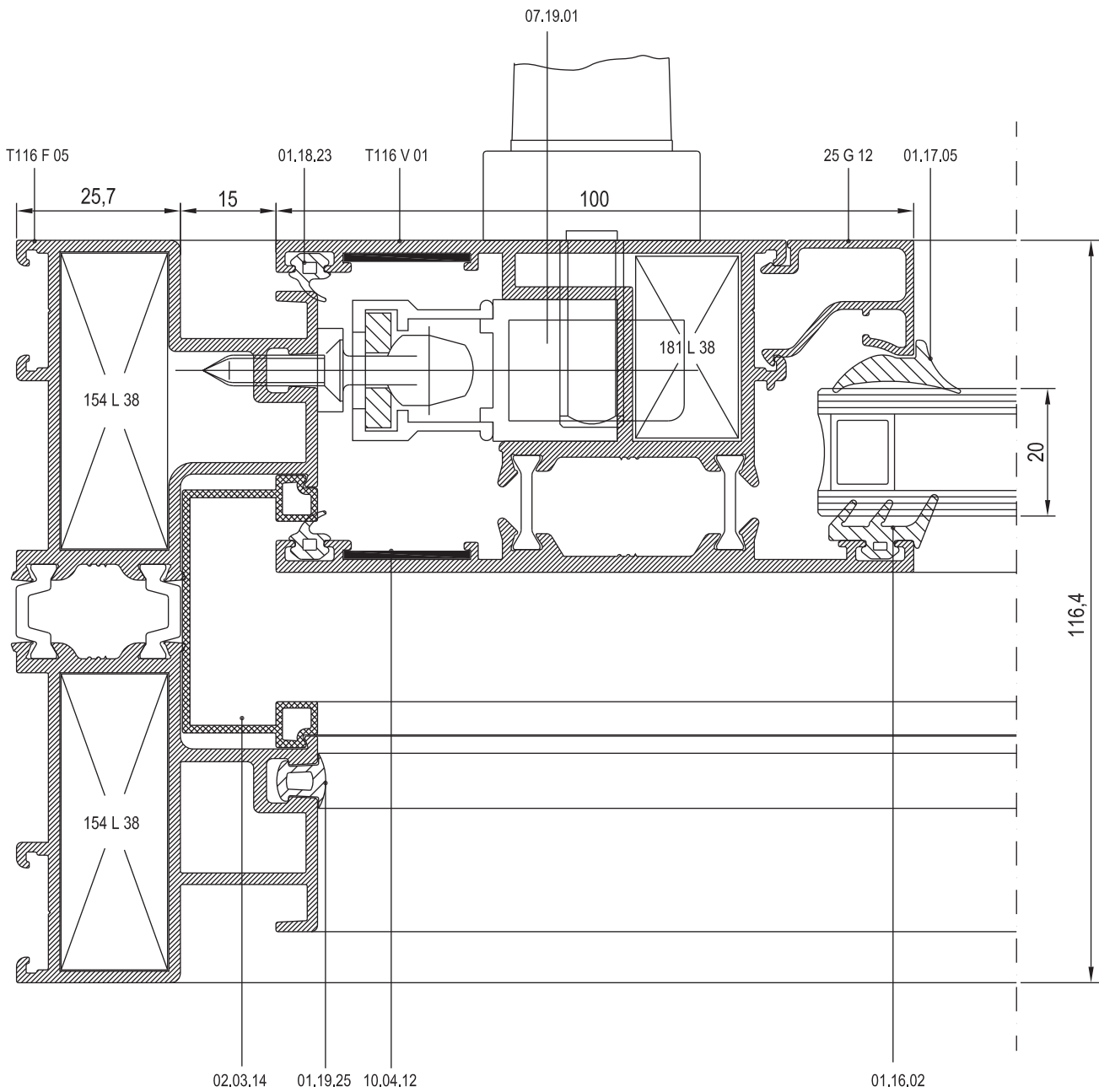
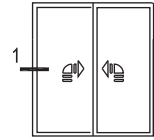
26

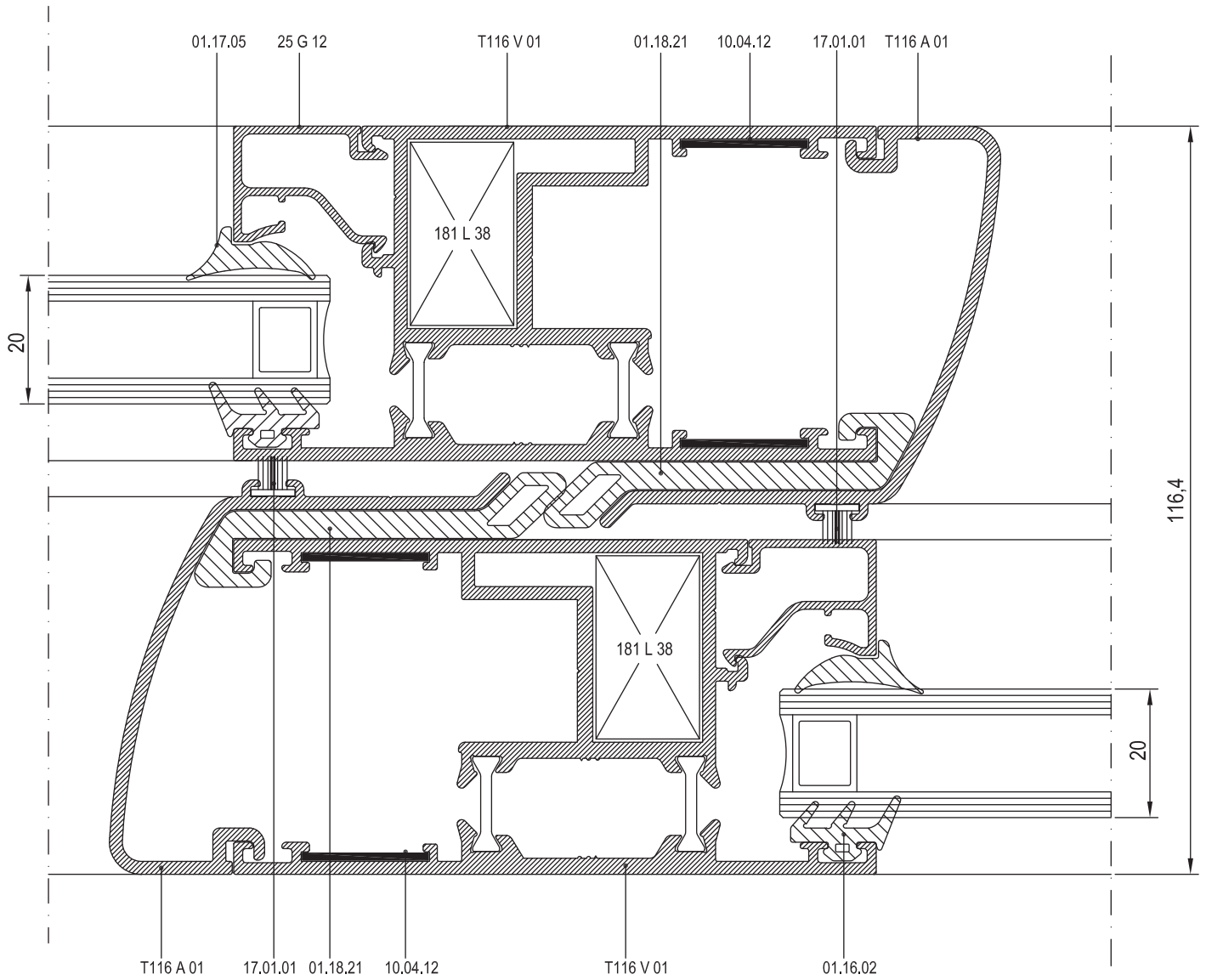
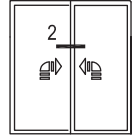
27

28

29

30





21

22

23

24

25

26

27

28

29

30



21

22

23

24

25

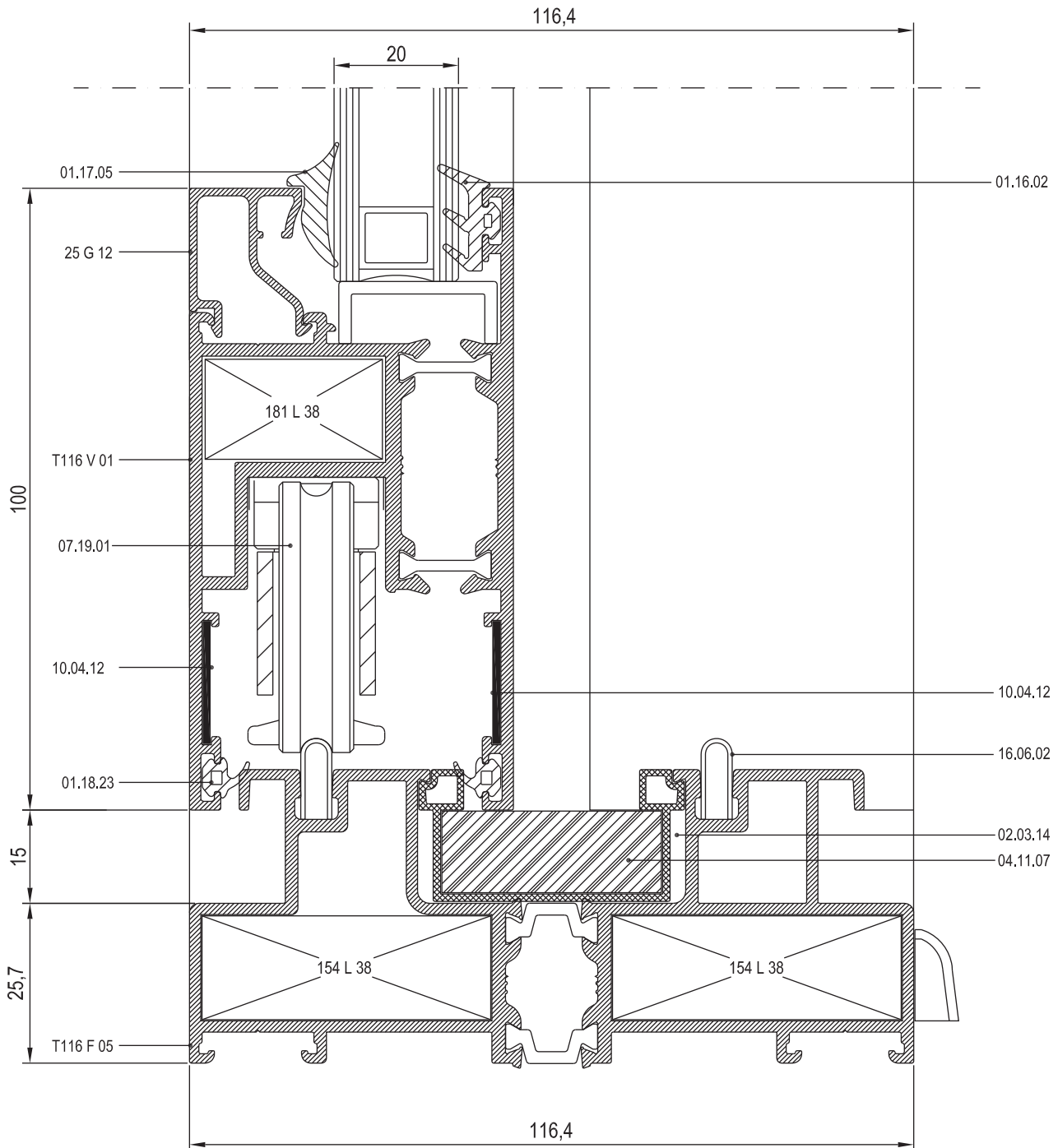
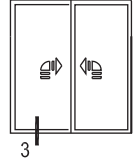
26

27

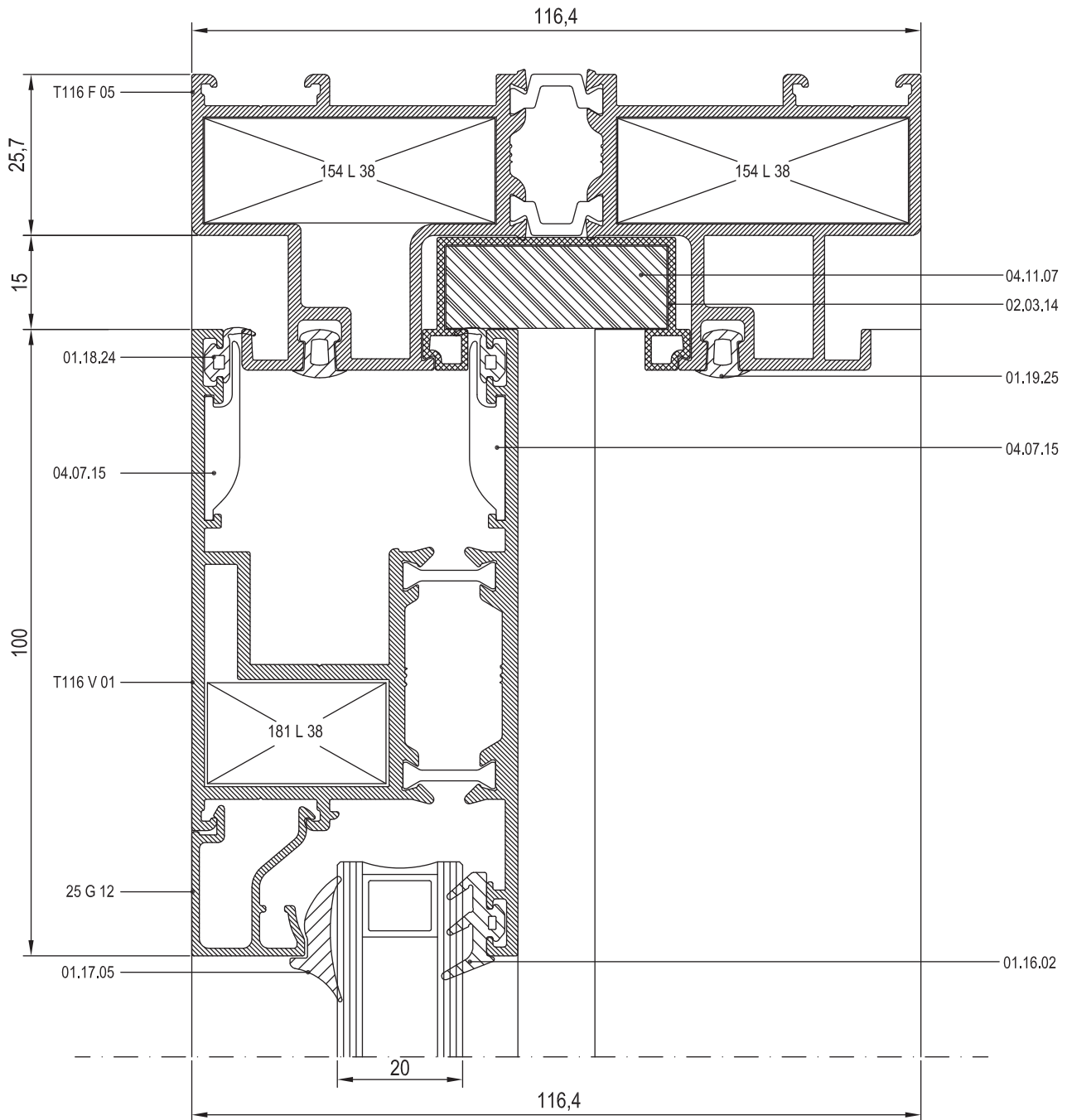
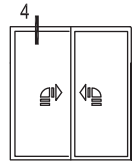
28

29

30







21

22

23

24

25

26

27

28

29

30



21

22

23

24

25

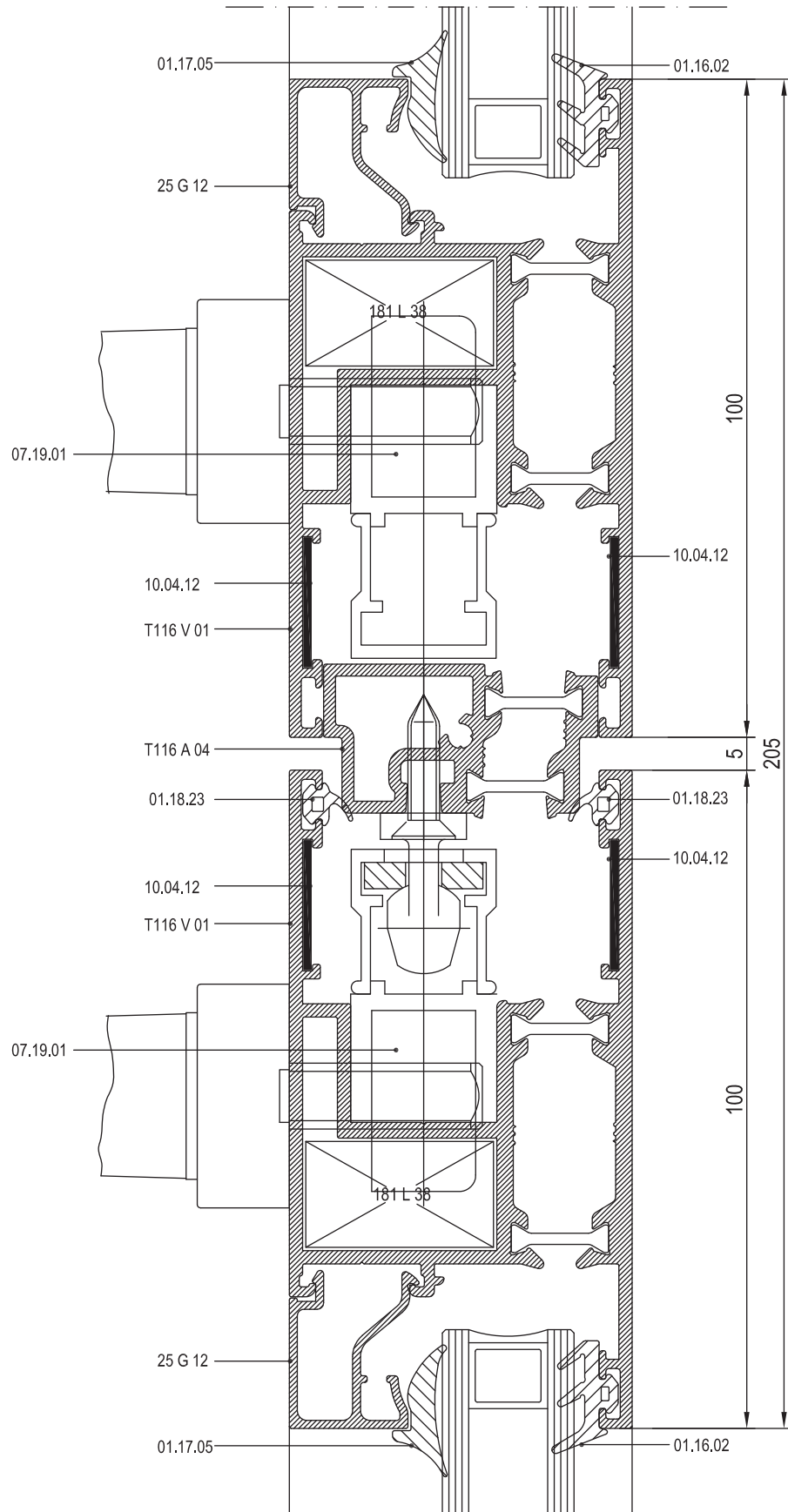
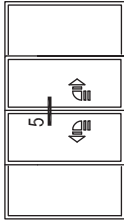
26

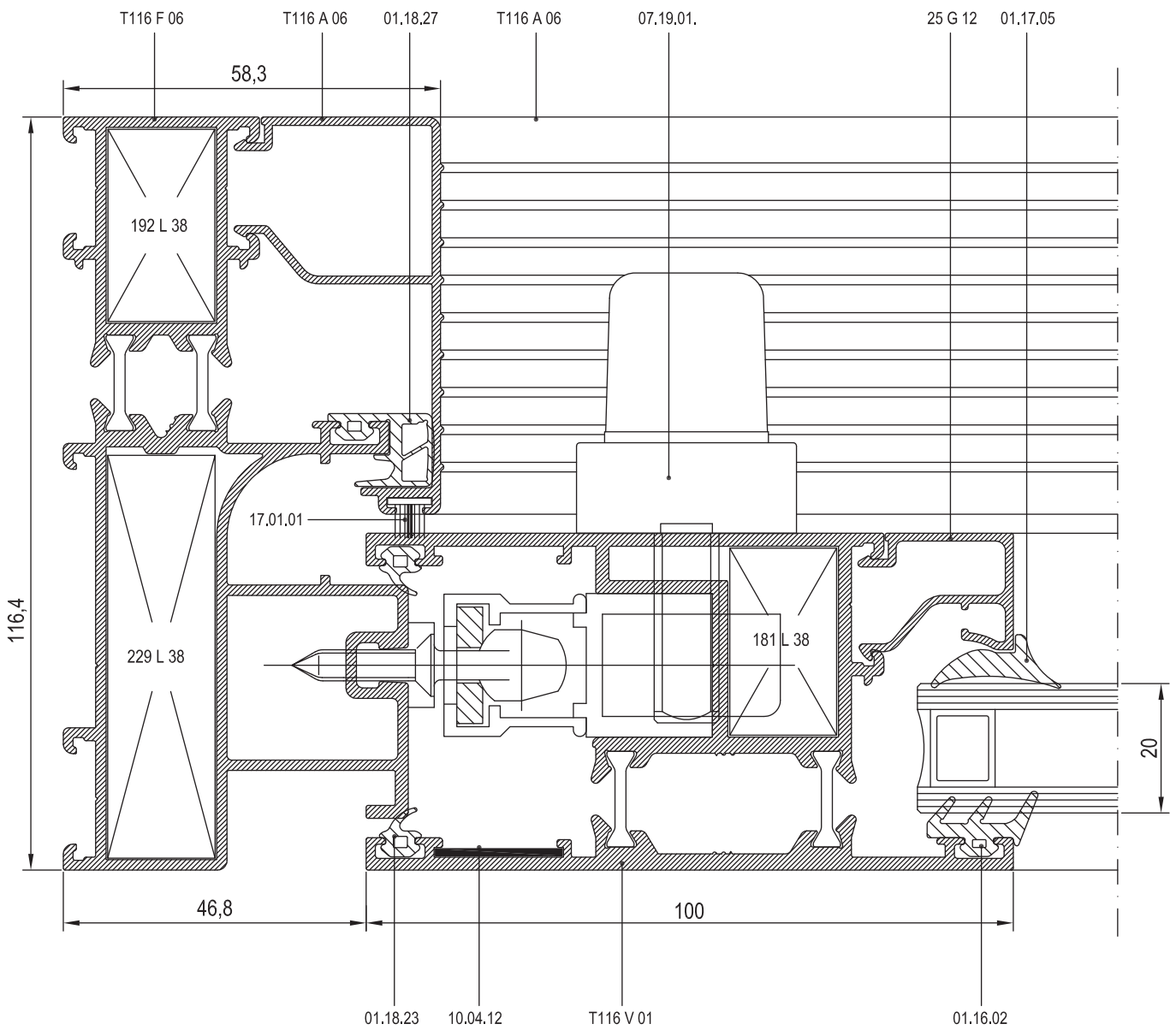
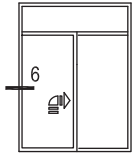
27

28

29

30





21

22

23

24

25

26

27

28

29

30



21

22

23

24

25

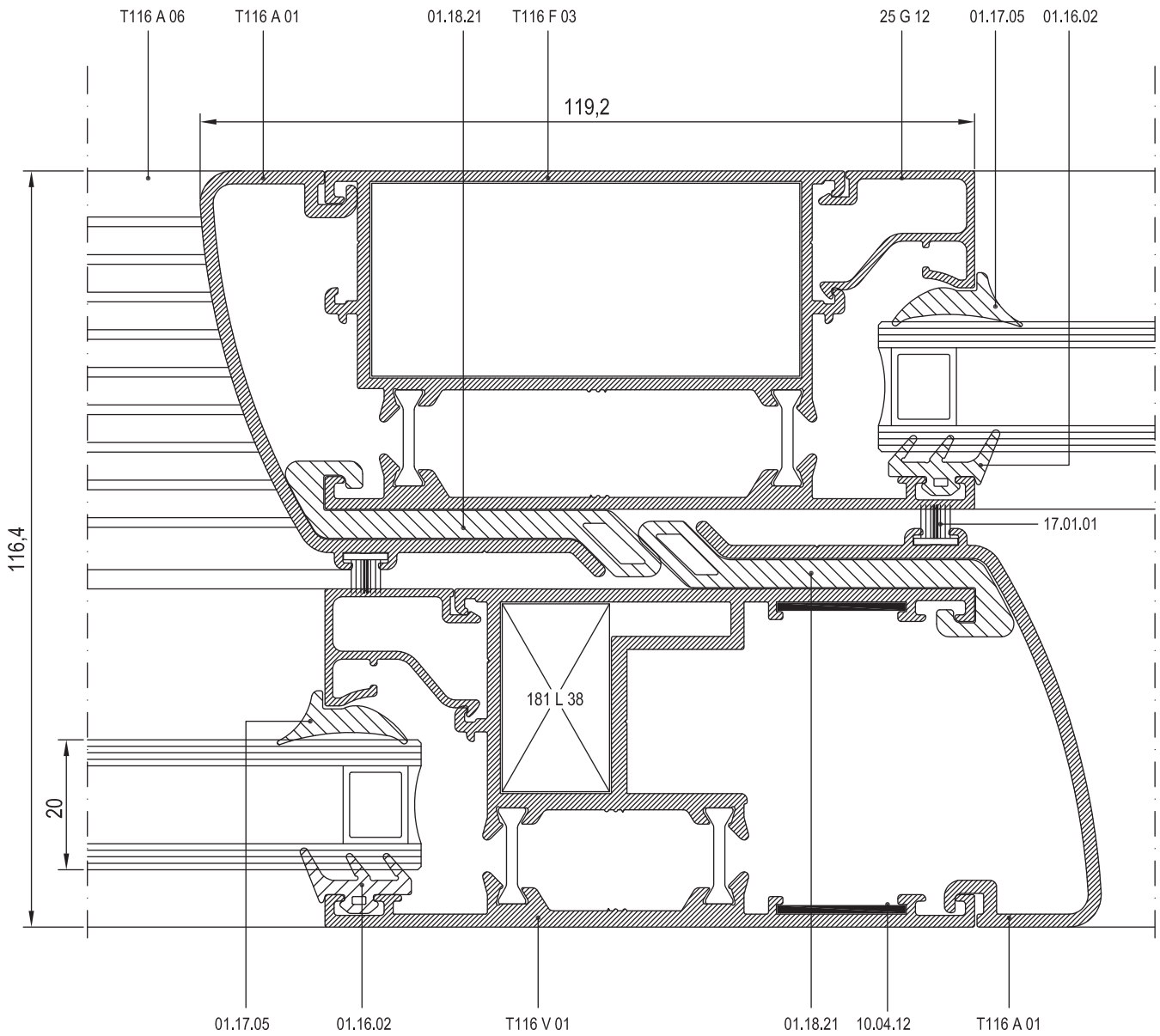
26

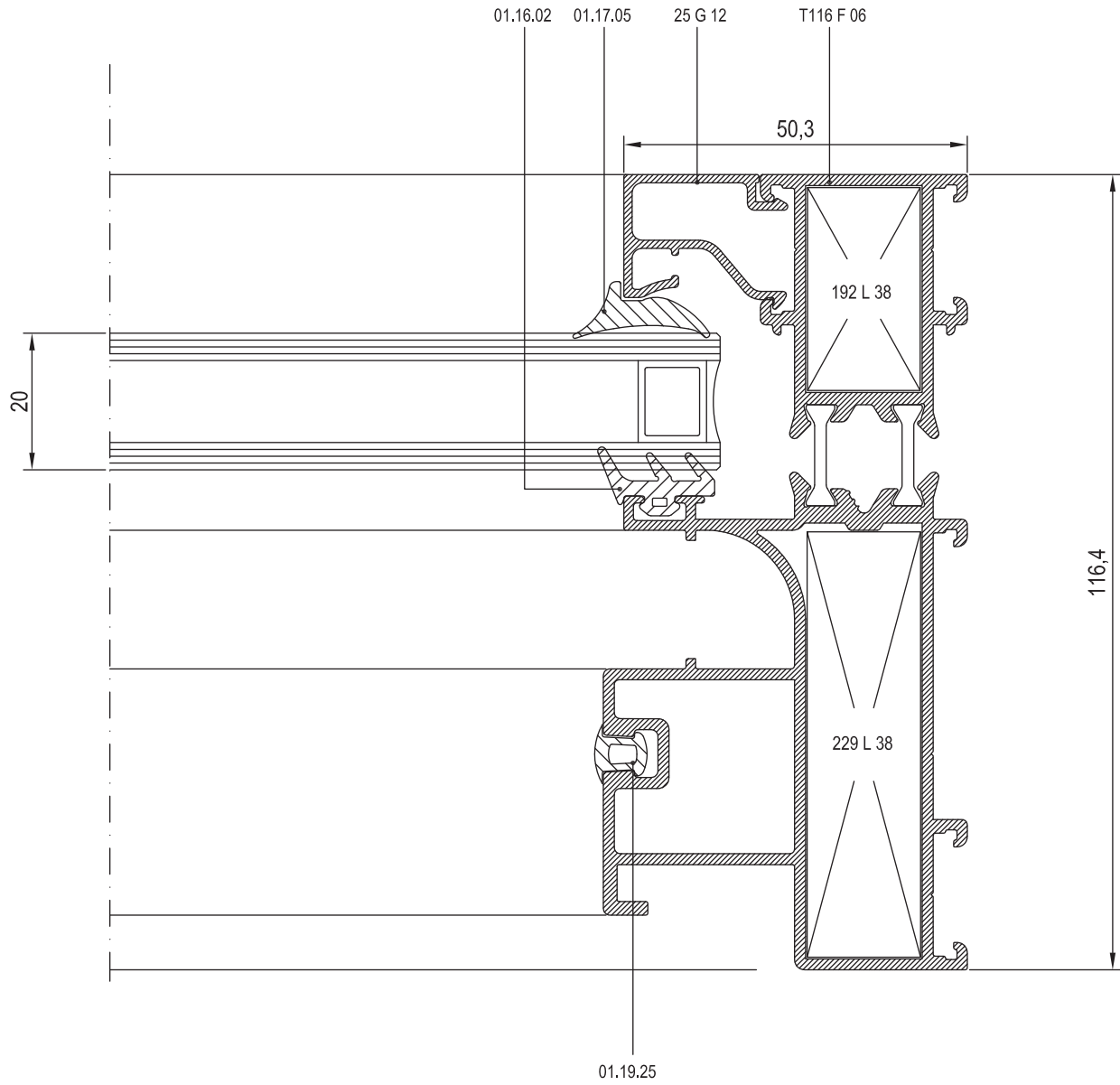
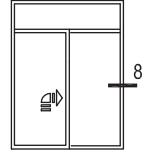
27

28

29

30





21

22

23

24

25

26

27

28

29

30



21

22

23

24

25

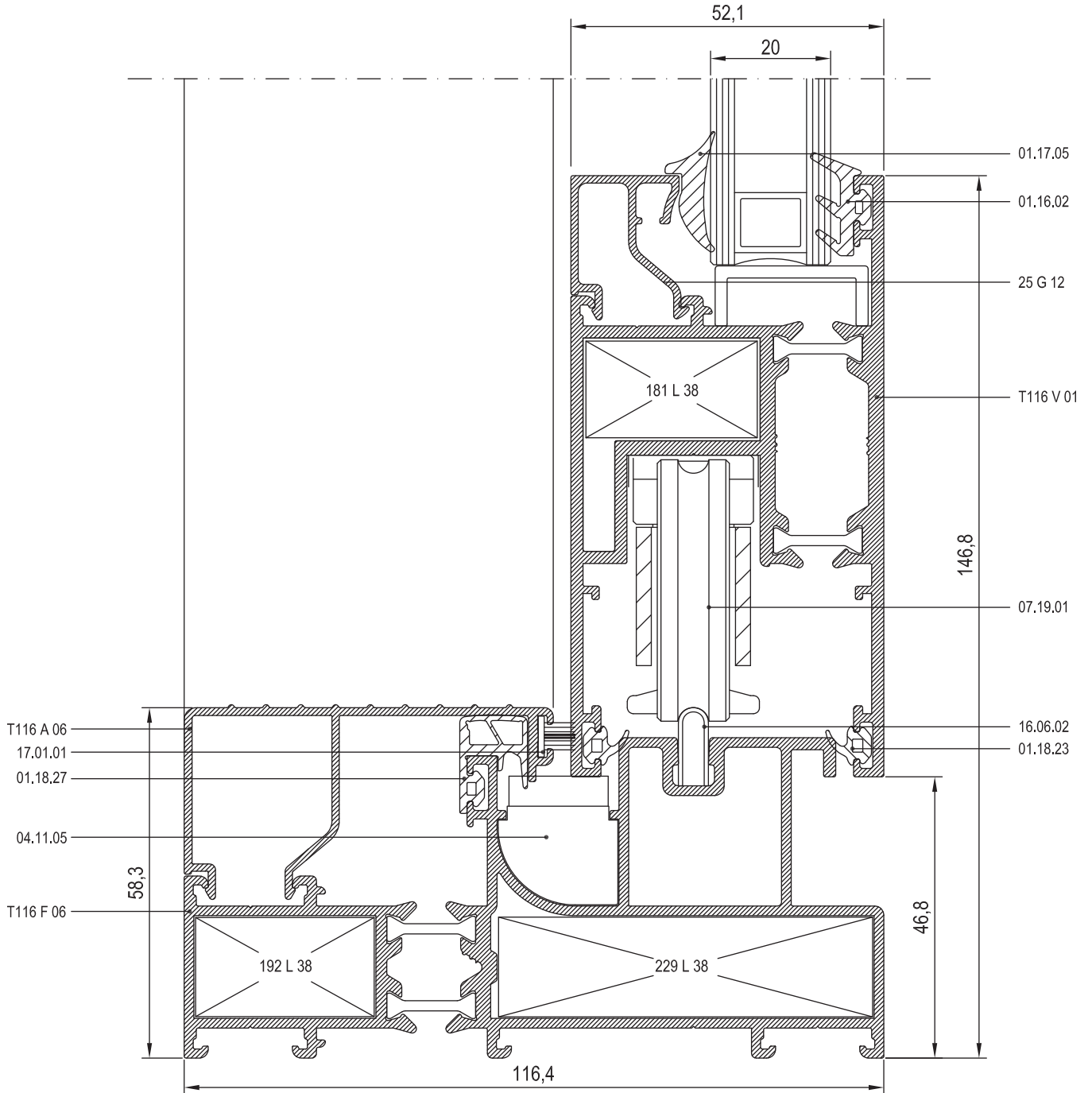
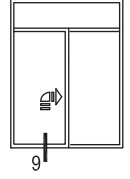
26

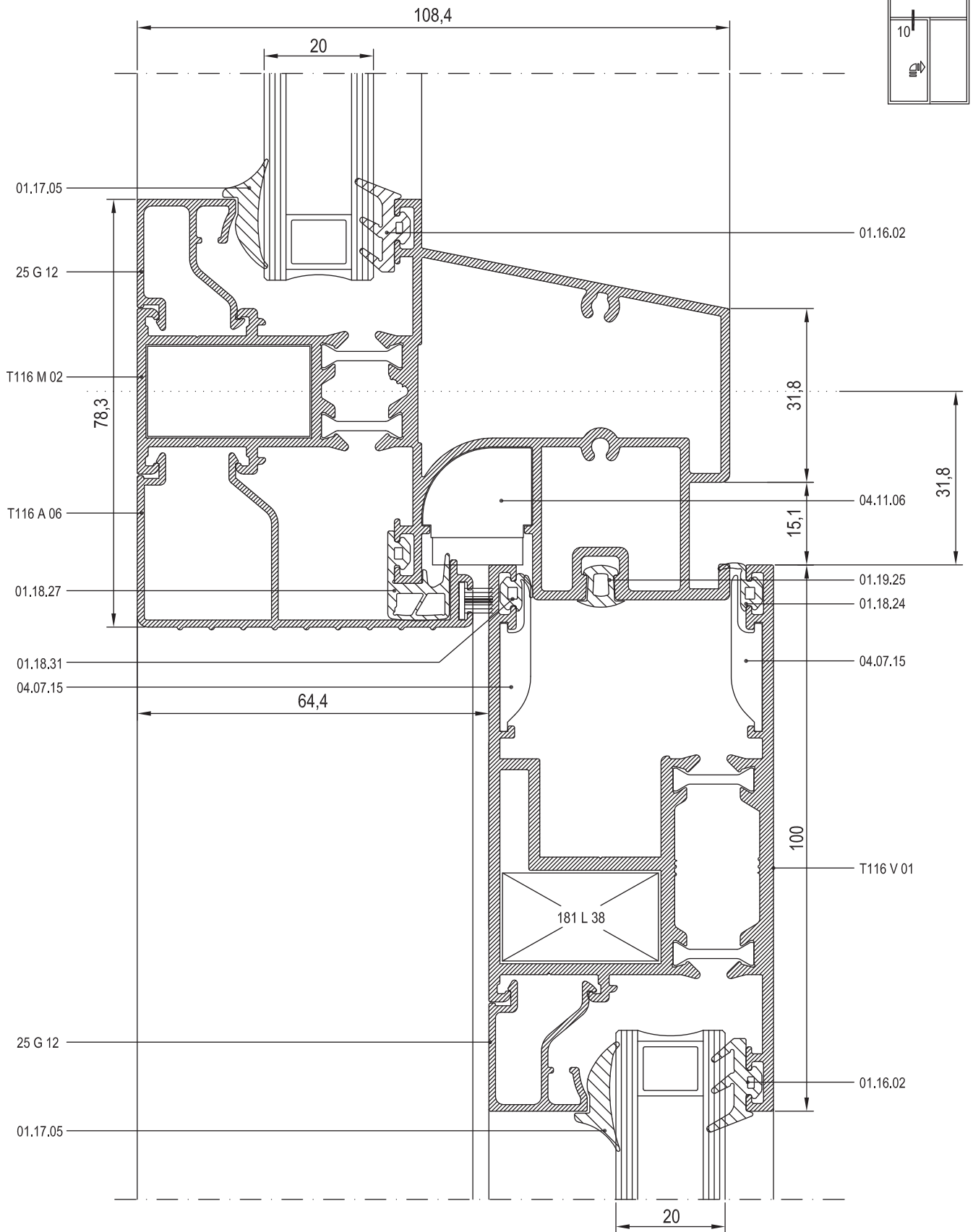
27

28

29

30





21

22

23

24

25

26

27

28

29

30



21

22

23

24

25

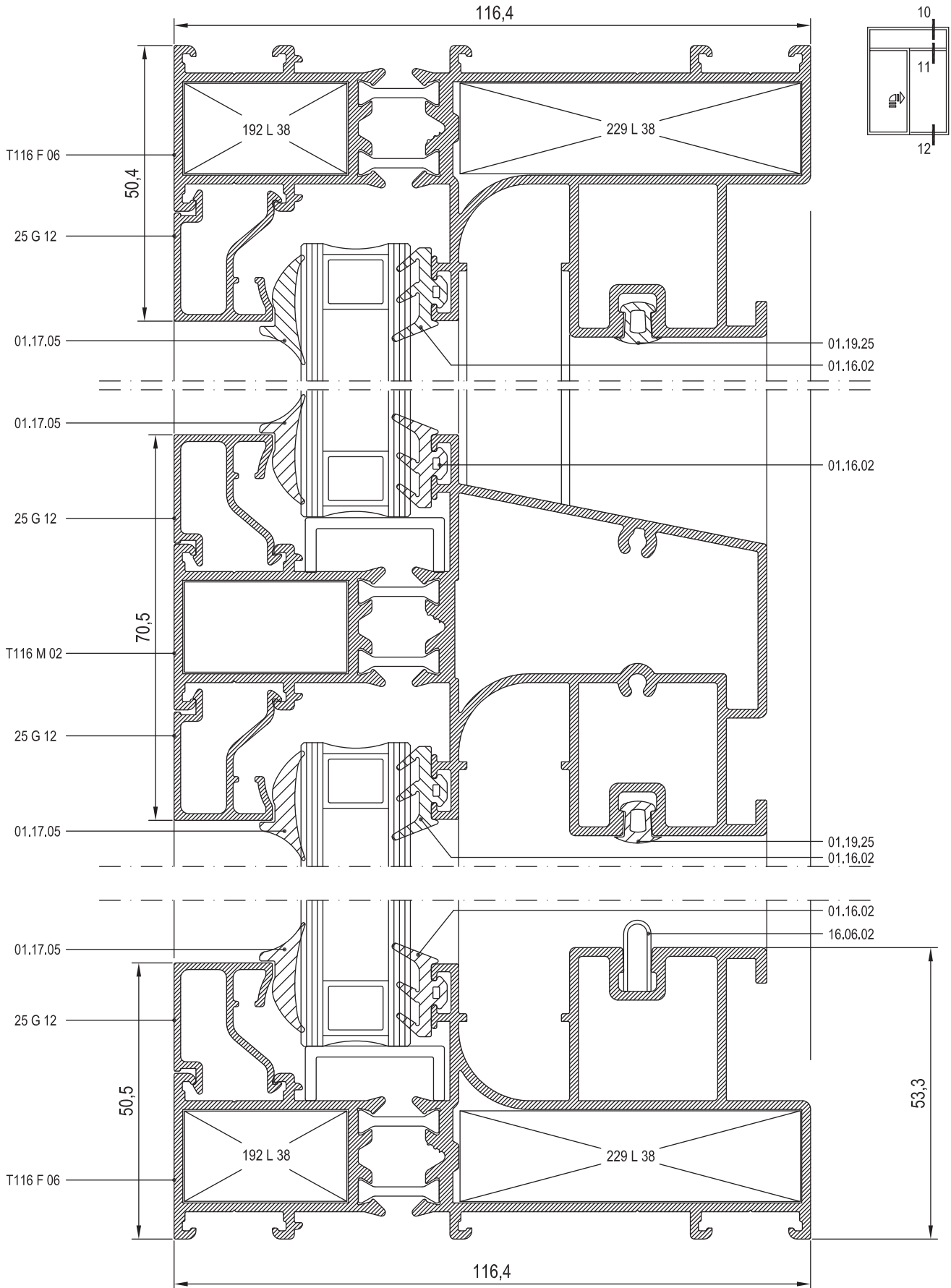
26

27

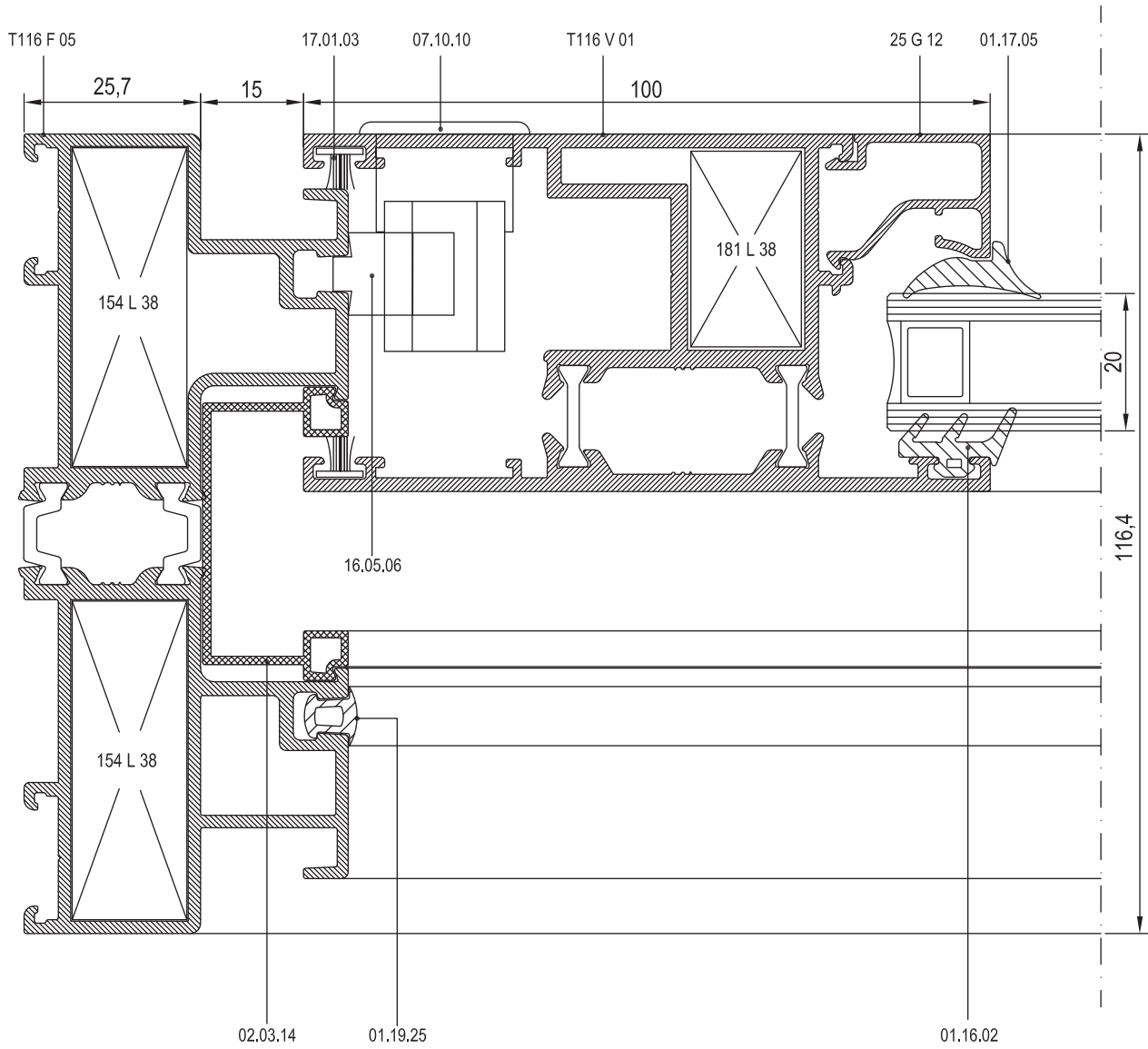
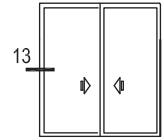
28

29

30







21

22

23

24

25

26

27

28

29

30



21

22

23

24

25

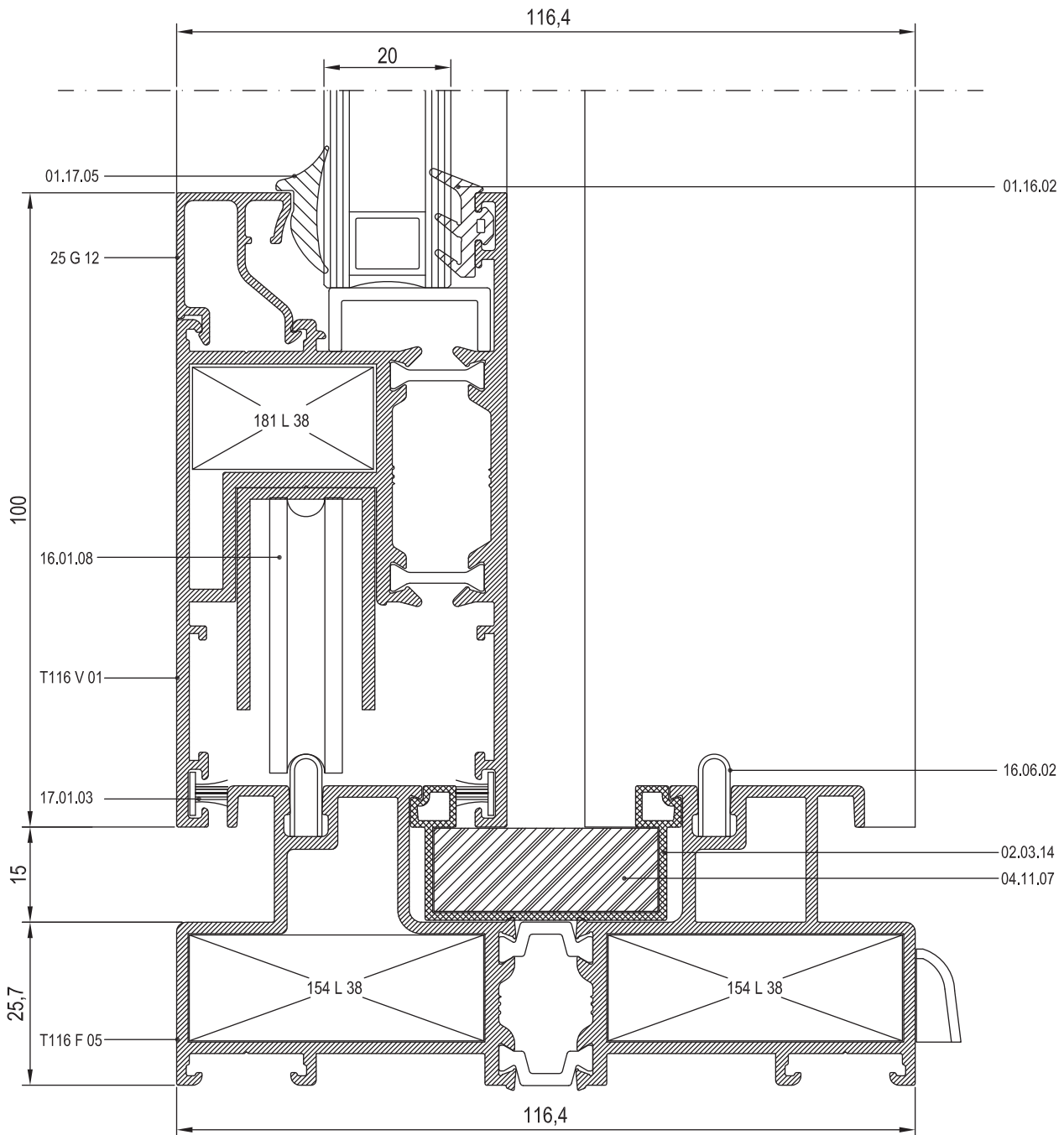
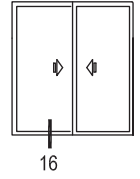
26

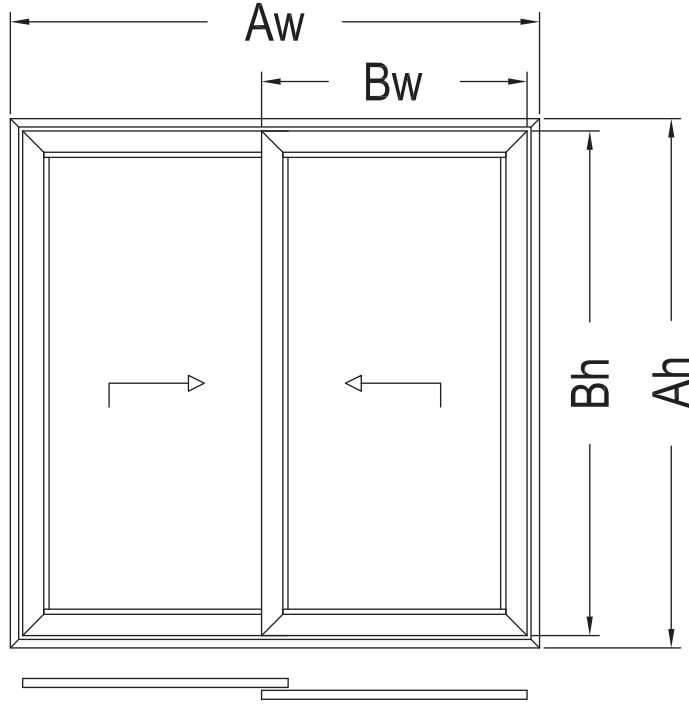
27

28

29

30

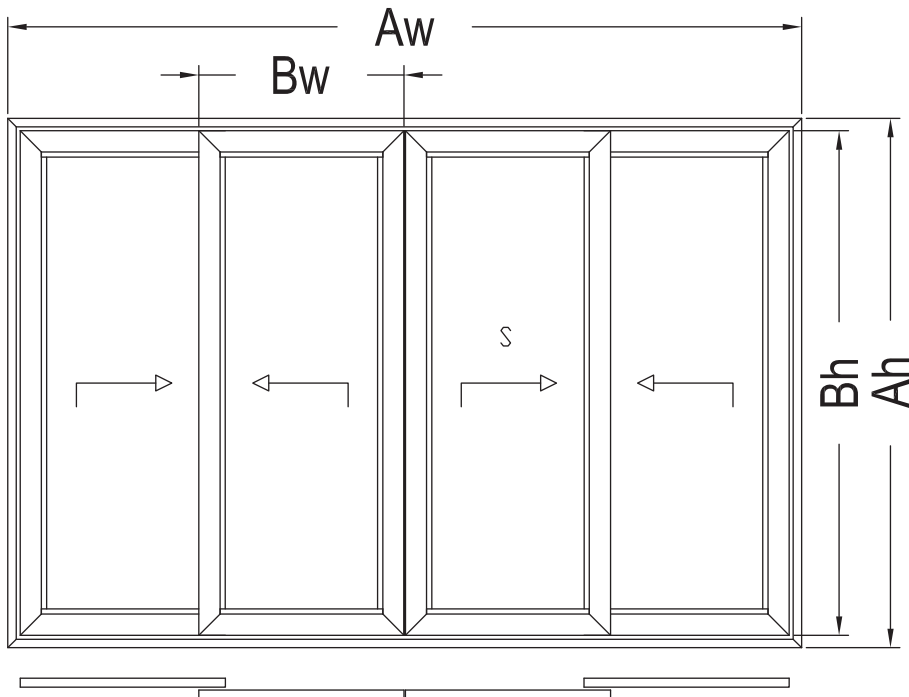




## PROFİLLER

KOD	PROFİL ÇİZİMİ	ADET	KESİM ÖLÇÜSÜ (mm)
T116 F 06		2	$A_w$
		2	$A_h$
T116 V 01		4	$B_w = \frac{A_w}{2} + 9,3$
		4	$B_h = A_h - 81,4$
25 G 10		4	$G_w = B_w - 160$
		4	$G_h = B_h - 200$
T116 A 01		2	$T = B_h$

CAM	$G_{lw} = B_w - 170$	$G_{lw} \times G_{lh}$ (m2)	2
	$G_{lh} = B_h - 170$		



## PROFİLLER

KOD	PROFİL ÇİZİMİ	ADET	KESİM ÖLÇÜSÜ (mm)
T116 F 06		2	$A_w$
		2	$A_h$
T116 V 01		8	$B_w = \frac{A_w}{4} + 28,4$
		8	$B_h = A_h - 81,4$
25 G 10		8	$G_w = B_w - 160$
		8	$G_h = B_h - 200$
T116 A 01		4	$T = B_h$
T116 A 04		1	$M = A_h - 129,7$

CAM	$G_{lw} = B_w - 170$	$G_{lw} \times G_{lh}$ (m2)	4
	$G_{lh} = B_h - 170$		



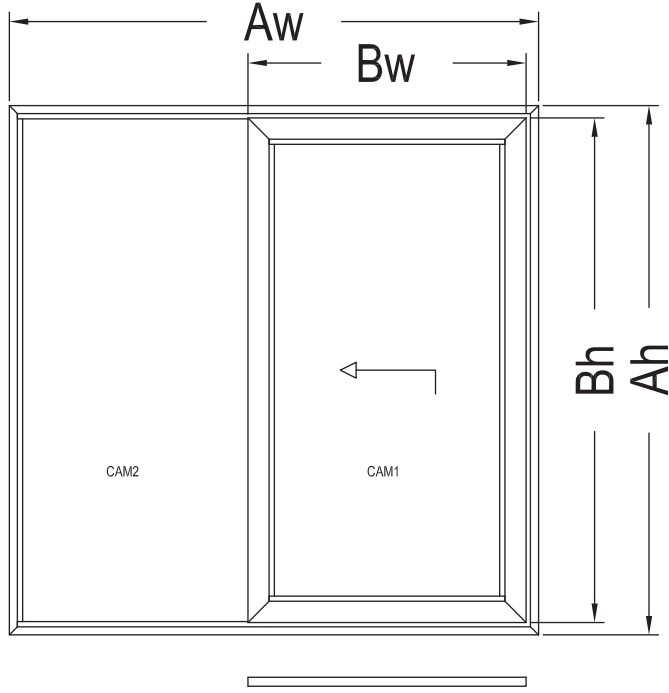
21

22

23

24

25



## PROFİLLER

KOD	PROFİL ÇİZİMİ	ADET	KESİM ÖLÇÜSÜ (mm)
T116 F 06		2	$A_w$
		2	$A_h$
T116 V 01		2	$B_w = \frac{A_w}{2} + 51,5$
		2	$B_h = A_h - 93,6$
25 G 10		4	$G_w = B_w - 160$
		2	$G_h1 = B_h - 200$
		2	$G_h2 = A_h - 100,6$
T116 A 01		1	$T1 = B_h$
		1	$T2 = B_h - 23,8$
T116 A 06		2	$K1 = B_w - 41,7$
		1	$K2 = A_h - 117,6$
T116 F 03		1	$Ch = A_h - 60,6$

CAM1	$G_{lw} = B_w - 170$	$G_{lw} \times G_{lh}$ (m2)	1
	$G_{lh1} = B_h - 170$		
CAM2	$G_{lw} = B_w - 170$	$G_{lw} \times G_{lh2}$ (m2)	1
	$G_{lh2} = A_h - 70,6$		

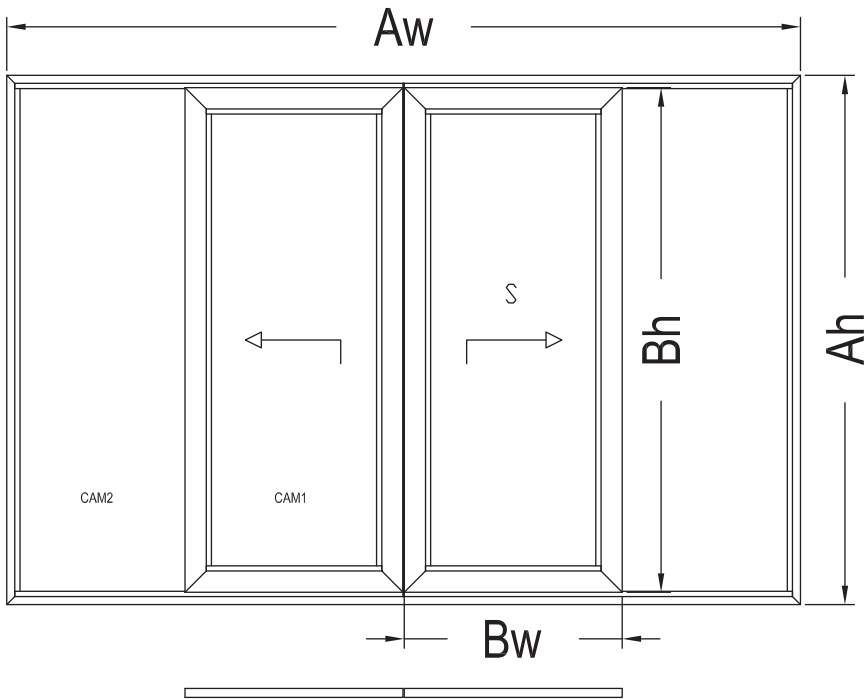
26

27

28

29

30



## PROFİLLER

KOD	PROFİL ÇİZİMİ	ADET	KESİM ÖLÇÜSÜ (mm)
T116 F 06		2	$A_w$
		2	$A_h$
T116 V 01		4	$B_w = \frac{A_w}{4} - 116,1$
		4	$B_h = A_h - 93,6$
25 G 10		8	$G_w = B_w - 160$
		4	$G_h1 = B_h - 200$
		4	$G_h2 = A_h - 100,6$
T116 A 01		2	$T1 = B_h$
		2	$T2 = B_h - 23,8$
T116 A 06		2	$K = B_w - 195$
T116 F 03		2	$Ch = A_h - 60,6$
T116 A 04		1	$M = A_h - 123,6$

CAM1	$G_{lw} = B_w - 170$	$G_{lw} \times G_{lh}$ (m2)	2
	$G_{lh1} = B_h - 170$		
CAM2	$G_{lw} = B_w - 170$	$G_{lw} \times G_{lh2}$ (m2)	2
	$G_{lh2} = A_h - 70,6$		



	<b>01.16.02</b> DIŞ CAM FITİLİ GLAZING GASKET (OUTSIDE) EPDM 90 gr/m			<b>01.18.27</b> SIZDIRMAZLIK FITİLİ SEALING GASKET EPDM 90 gr/m	
	<b>01.17.03</b> İÇ CAM FITİLİ GLAZING GASKET (INSIDE) EPDM 46 gr/m			<b>01.18.31</b> BİNİ FITİLİ ACOUSTICAL GASKET EPDM 27 gr/m	
	<b>01.17.04</b> İÇ CAM FITİLİ GLAZING GASKET (INSIDE) EPDM 55 gr/m			<b>01.19.25</b> RAY FITİLİ RAIL GASKET EPDM 36 gr/m	
	<b>01.17.05</b> İÇ CAM FITİLİ GLAZING GASKET (INSIDE) EPDM 60 gr/m			<b>02.03.14</b> PVC PROFİL PVC PROFILE	
	<b>01.18.21</b> KENET FITİLİ CONNECTION GASKET EPDM 80 gr/m			<b>04.06.48</b> PVC ADAPTÖR PARÇASI-ÜST PVC ADAPTER PART-UP T116 A 04 İÇİN FOR T116 A 04	
	<b>01.18.23</b> BİNİ FITİLİ ACOUSTICAL GASKET EPDM 29 gr/m			<b>04.06.49</b> PVC ADAPTÖR PARÇASI-ALT PVC ADAPTER PART-UP T116 A 04 İÇİN FOR T116 A 04	
	<b>01.18.24</b> BİNİ FITİLİ ACOUSTICAL GASKET EPDM 30 gr/m			<b>04.06.50</b> PVC PARÇA-ALT PVC CAP-BOTTOM T116 M 02 İÇİN FOR T116 M 02	

21

22

23

24

25

26

27

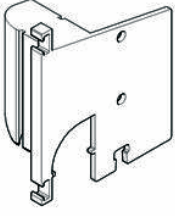
28

29

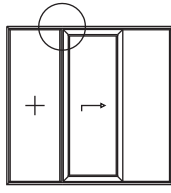
30



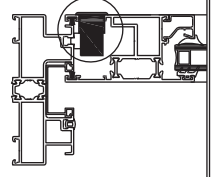
21



**04.06.51**  
PVC PARÇA-ÜST  
PVC CAP-UPPER  
T116 M 02 İÇİN  
FOR T116 M 02



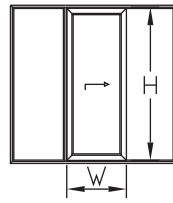
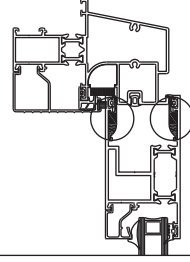
**07.10.10**  
SÜRME KİLİT  
SLIDING LOCK  
SİYAH-BEYAZ-GRİ  
BLACK-WHITE-GREY



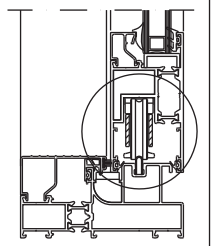
22



**04.07.15**  
PVC SEVİYELEME PARÇASI  
PVC BALANCE PART  
50 mm



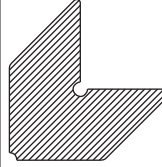
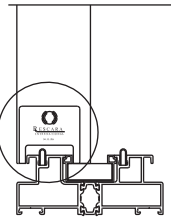
**07.19.01**  
KALDIR-SÜR AKSESUARI  
HEBESCHIEBE ACCESSORY  
Wmax = 2120 mm  
H = 1751 mm ~ 2250 mm



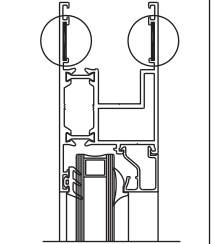
23



**04.10.19A**  
PVC KANAT KAPAĞI (ALT)  
PVC VENT CAP (DOWN)



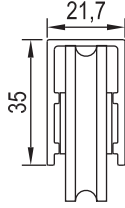
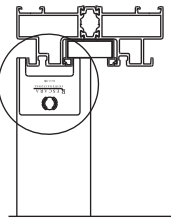
**10.04.12**  
KÖŞE ÇAVUŞU  
CORNER CONNECTION PART  
PASLANMAZ ÇELİK  
STAINLESS STEEL



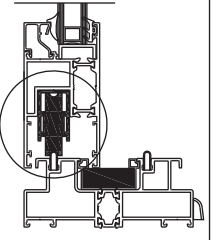
24



**04.10.19B**  
PVC KANAT KAPAĞI (ÜST)  
PVC VENT CAP (UP)



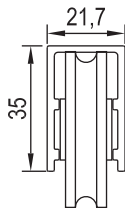
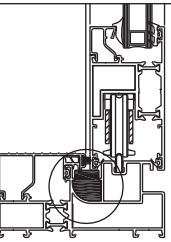
**16.01.08**  
ÇİFTLİ RULMAN  
DOUBLE BEARING



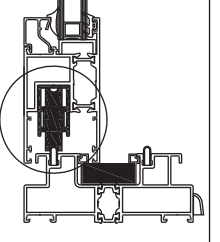
25



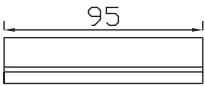
**04.11.05**  
SIZDIRMAZLIK PARÇASI-ALT  
SEALING PART-BOTTOM  
EPDM



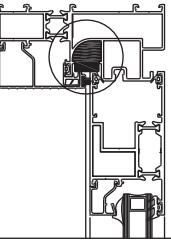
**16.01.09**  
TEKLİ RULMAN  
SINGLE BEARING



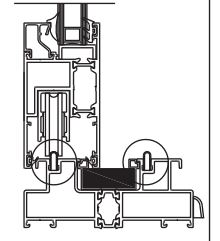
27



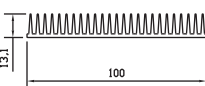
**04.11.06**  
SIZDIRMAZLIK PARÇASI-ÜST  
SEALING PART-UPPER  
EPDM



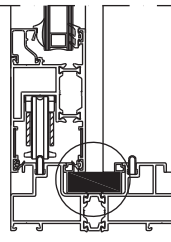
**16.06.02**  
ÇELİK RAY  
STEEL RAIL  
2 MT



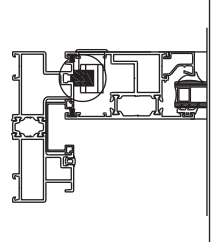
28



**04.11.07**  
SIZDIRMAZLIK PARÇASI  
SEALING PART  
EPDM




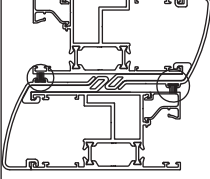
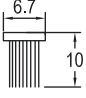
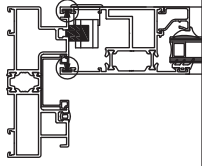
**16.05.06**  
SÜRME KİLİT ADAPTÖRÜ  
LOCK ADAPTER



29

30



	<b>17.01.01</b> KIL FITİL BRUSH 1 PAKET : 275 Mt 1 PACKAGE : 275 Mt				
	<b>17.01.03</b> KIL FITİL BRUSH 1 PAKET : 125 Mt 1 PACKAGE : 125 Mt				

21

22

23

24

25

26

27

28

29

30

# RESCARA SİSTEM

Alüminyum Kapı Pencere ve  
Giydirme Cephe Sistemleri



21

22

23

24

25

26

27

28

29

30